

# Client Computing Devices from Fujitsu

FUJITSU



**Partner Power Pack**  
Inside: the assets you need to boost your sales >>>

Want to know more? Talk to your Fujitsu account manager or contact the partner center via email:

>>> [ro-servers@alef.com](mailto:ro-servers@alef.com)

 **Windows 10 Pro**

Windows 10 Pro means business.

shaping tomorrow with you

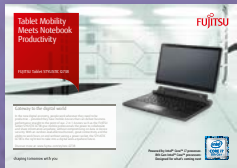


# How to use the assets in this pack

1

## Sales Enablement

Use our product flyer written specifically for you, to quickly get up to speed with our solutions.



2

## Awareness Comms

Then build awareness among your customers, with our social posts, copy blocks and web banners.



3

## Lead Gen

Use our co-branded emails to warm customers up before you contact them.



4

## Conversation starters

Ensure your conversations grow by following up with our infographics, blogs, videos and solution flyers.





# Why Fujitsu for client computing devices?

We are in charge of our devices from cradle to grave – and build them in our own factory in Europe. It gives us the control we need to innovate and optimize our products.

The result is high-quality, low-energy products that are as secure as they are easy to use. They are both eco and budget-friendly. And you can configure them to your specific needs.

For your clients, it means confidence. That they have made a good decision. That their data is safe. That their people are happy and productive. That they are ready for the future.

## PalmSecure:

The most accurate biometric technology on the market

With our palm-vein sensor, your people can prove who they are with a wave of their hand.

It is quick, secure, hygienic and easy.

» Learn more



### Fast

Innovative engineering from Japan and Germany.  
Exceptional performance.



### Reliable

High availability, low failure rates.  
Rigorous testing.  
Award-winning production facilities.



### Simple

Ergonomic design.  
Easy to configure and personalize.



### Affordable

Better performance saves more money over time.  
Universal accessories.  
Shift from capex to opex with HaaS.



### Secure

Choice of smartcards and biometric sensors.  
Delete data securely.





# Welcome to the human-centric workplace

Work is no longer somewhere you go, it is something you do. A new workforce and new technology are driving trends like: BYOD, flexible working, and remote collaboration. These trends can help you gain an edge. But they can also make it hard to manage and secure IT. Our devices help your customers to free their people while retaining control and direction.

Embrace the future workplace to:



Promote  
creativity



Foster  
collaboration



Increase  
efficiency



Improve  
motivation

## The world is your workplace

We explore the future workplace in more detail in another of our playbooks. Take a look and discover the challenges and how to meet them.



# Solutions Overview



**LIFEBOOK  
Notebooks**

From reliable all-rounders to the world's lightest 13.3-inch notebook, our LIFEBOOK range takes care of a wide range of needs. And with accessories you can use across models.



**STYLISTIC  
Tablets**

Compact. Lightweight. Powerful. We have tablets for every environment. With pen, touch and keyboard input, they free people to work their way. At the same time, our security features keep data safe.



**ESPRIMO  
PCs**

High on performance, yet low on noise. Our energy-efficient PCs create an ideal workspace. Plus, we can build and configure them to order.



**CELSIUS  
Workstations**

Mobile, desktop or rack workstations support you when you have the need for speed in order to save time. Make use of their unmatched processor and graphics performance, expandability, flexibility and reliability.



**Accessories  
and support**

From compatible port replicators to extended warranties, we help you get the most from your devices.



# LIFEBOOK Notebooks: a solution for every user

Every business is different.

And the people within a business have differing needs. That is why our breadth of devices is such a strength.

Within our LIFEBOOK range, you are sure to find the ideal notebook – or combination of notebooks – for your customers.



## ALL-ROUND

### A SERIES

- HD display, anti-glare, nontouch
- Modular bay option
- Keyboard with NumPad



## ADVANCED

### E SERIES

- FHD or HD display, antiglare, non-touch
- Modular bay option
- Fingerprint sensor, SmartCard reader, TPM

### U7 SERIES

- FHD or HD display, antiglare, touch option
- USB Type-C and LAN connector
- Palm vein / fingerprint sensor, TPM 2.0



## SUPERIOR

### S938

- WQHD/FHD IGZO display, glare touch or anti-glare non-touch
- Modular bay option
- Palm vein / fingerprint sensor / SmartCard reader

### U938

- FHD display, glare touch or anti-glare non-touch
- 4G/LTE, HDMI, USB Type-C and LAN connector
- Palm vein / fingerprint sensor / SmartCard reader

# LIFEBOOK Notebooks: a closer look

Here are just three of our LIFEBOOK notebooks – each playing to different strengths.

A great price-performance ratio



## LIFEBOOK E448/E458

- **Modern and robust design.** 23.9mm thin, starts at 1.79kg, new cross-wave 3D texture finish
- **Clear viewing.** 14 or 15.6-inch HD or FHD screen
- **Reliable and secure.** New integrated area, fingerprint sensor and TPM 2.0
- **Best-in-class connectivity.** Full set of ports with HDMI, VGA, LAN, USB type C. Embedded 4G/LTE
- **Easy to service and upgrade.** Easy to change battery, memory, storage and LTE and WLAN components
- **Windows 10 Pro.** Fujitsu recommends Windows 10 pro

» See the E448

» See the E458

Take style and security with you



## LIFEBOOK U748

- **Easy to upgrade.** Easy to change battery, memory and storage
- **Family concept.** Shared components, such as port replicator
- **Elegant mobile design.** 19.2mm, from 1.43kg, HD or FHD display, anti-glare and touch panel option
- **Excellent security.** Embedded smartcard reader, palm-vein sensor or finger-print sensor
- **Complete connectivity.** Full set of interfaces: full-size LAN connector, full-size VGA. Embedded 4G/LTEm Wlan and Bluetooth
- **Windows 10 Pro.** Fujitsu recommends Windows 10 pro

» Learn more

Portable.  
Powerful.  
Protected.



## LIFEBOOK U938

- **Ultra-slim and robust.** Starting at just 920g, 15.5-inch screen, magnesium housing
- **Excellent security.** Embedded smartcard reader, palm-vein sensor or finger-print sensor. TPM 2.0
- **Work on the go.** All-day battery, anytime USB charge, integrated SSDs for powerful performance
- **Best-in-class connectivity.** Full set of ports with HDMI, VGA, LAN, USB type C. Embedded 4G/LTE
- **Available in red and black.**
- **Windows 10 Pro.** Fujitsu recommends Windows 10 pro

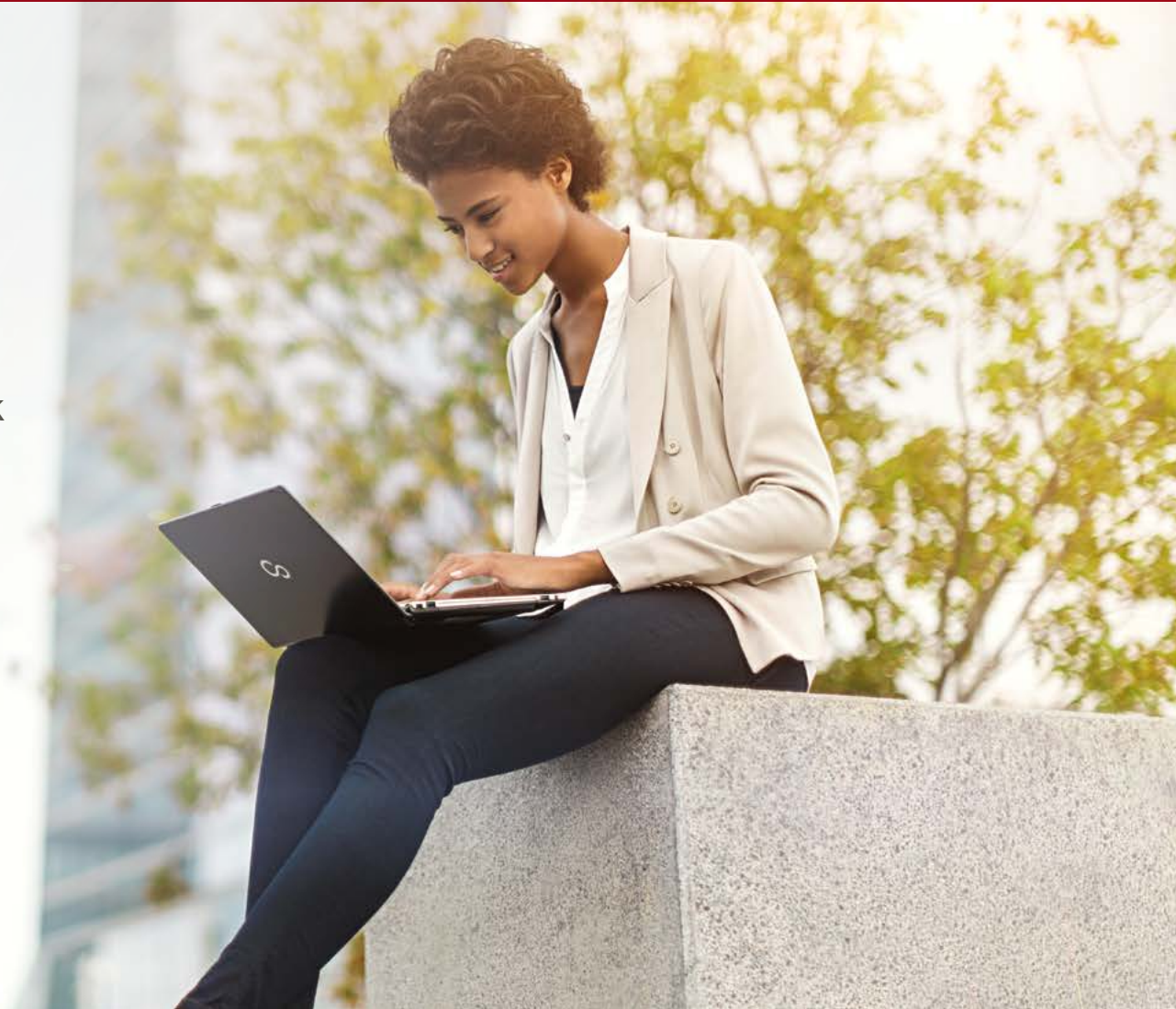
» Learn more



# LIFEBOOK and STYLISTIC 2-in-1 devices: go mobile, stay productive

With the right mobile devices, your customers can be more efficient. They can also give employees a better work-life balance and attract a new generation of talent.

Let us take a closer look at three devices that work for both your customer's business and its people.





# STYLISTIC Tablets and LIFEBOOK 2-in-1's

Your customers have competing challenges.  
For example:

- how to give people the freedom to work on the move, whilst also keeping their data safe; and
- how to accommodate different working styles, whilst also keeping control of diverse technologies.

Our STYLISTIC and LIFEBOOK 2-in-1's help them meet all of these demands. From tablets that work in all conditions to tablets that double up as notebooks.



## Tablets worth talking about:

### Top system quality

- High availability, low failure rates
- Rigorous tests
- Market-beating reliability

### Experienced engineering

- 30 years in mobile devices
- Innovative design and production
- Universal accessories for continuity

### Excellent production

- Tablets are produced in Japan
- Award-winning production processes and facilities



# LIFEBOOK and STYLISTIC 2-in-1 devices: go mobile, stay productive

Easy to use –  
whichever way  
you work



## LIFEBOOK P728

- **Work your way.** 360-degree folding screen, 4 working modes, 12.5-inch FHD anti-glare screen
- **Stay connected.** USB Type-C port for charging and connecting
- **Superior security.** Integrated PalmSecure® sensor: the most accurate biometric security
- **Lightweight.** Weighs just 1.2 kg
- **Long battery life.** Up to 10 hours. And charge 80% of the battery in under 1 hour
- **Windows 10 Pro.** Fujitsu recommends Windows 10 pro

» Learn more

Go-anywhere  
productivity



## STYLISTIC Q738

- **A tablet and notebook in one.** Durable 2-in-1 detachable, 8th gen Intel processors
- **Ergonomic.** 13.3-inch FHD anti-glare screen, pen input, supports 4k pressure levels
- **Lightweight.** Weighs just 780g
- **Long battery life.** Up to 10 hours
- **Windows 10 Pro.** Fujitsu recommends Windows 10 pro

» Learn more

Your flexible  
business  
companion



## STYLISTIC V727

- **Highly durable 2-in-1.** Detachable 12.3-inch magnesium display, with FHD anti-glare screen
- **Silent working.** State-of-the-art, fan-less design
- **Transform mode in an instant.** Work in notebook mode; present in tablet mode.
- **More power to you.** A digital extension of your creativity, with a Wacom AES pen and pen garage.

» Learn more



# ESPRIMO Desktops: Space saving designs for the modern workplace

Offer your customers a range of state-of-the-art PCs that are easy to manage and easy to expand. With the features a modern business needs, they are ready to run the applications of today and tomorrow.





# ESPRIMO Desktops: Space saving designs for the modern workplace

## The Mini with More PC per cm<sup>3</sup>



### ESPRIMO Q957

- **Fully fledged mini PC.** Optical drive, integrated power supply
- **Up to 7th Gen Intel® Core™ i7 vPro™ Processor.**
- **Multi-bay concept.** Supports flexible choice of bay devices including SmartCard reader and PalmSecure™ sensor
- **Lowest power consumption.** Needs only 5 watts in idle-mode & less than 4 watts in Low Power Active Mode
- **Integrated VESA mount.** For a tidier workspace
- **Connectivity.** Latest generation USB type C connector

» Learn more

## Your plug-and-work PC



### ESPRIMO AIO K557

- **Human-centric setup.** 60.5 cm (23.8-inch) Full HD and anti-glare display with wide viewing angles, silent PC, easy access to front I/Os including brightness control, VESA wall mount
- **Ultimate usability and ergonomic comfort.** Stand with four-stage height adjustment, screen with a large swivel range (340 degree) and tilt (0-20°), front audio and USB for easy access and space saving on the sides
- **Excellent performance.** Up to 7th Gen Intel® Core™ processor
- **Energy-efficient.** Highly efficient power supply
- **Strong security.** Latest TPM controller, SmartCard reader and EraseDisk option
- **Easy to maintain.** Upgrade without tools, lock cable cover with padlock or Kensington lock

» Learn more

## Impacts your work, not your environment



### ESPRIMO P957

- **Zero-noise PC.** Maintain a pleasant workspace with a quiet system\*
- **Always available.** Stay ready to respond and reduce your energy bill with a low-power active mode and power supply
- **Low power, high performance.** 7th Gen Intel® Core™ processor, a switched monitor outlet and a 94%-efficient power supply
- **System management.** Simple system administration for complex IT infrastructures
- **Green technology.** Halogen-free printed circuit board, smart product concept for the entire lifecycle

\*Zero-noise PC function is available only in E94+ version, i.e. ESPRIMO P957/E94+

» Learn more



# CELSIUS Workstations: For extra power and performance

For the most demanding processes and applications, your customers will need to look beyond standard notebooks and PCs.

New technologies like virtual reality, deep learning, the increasing demand in high-end visualization drive for an increase in workstation power.

CELSIUS workstations are designed to support the most demanding applications and immensely large data sets - 24/7.

## The goal is clear:

- Wait less
- Do more
- Safe time



# 12 Reasons to buy a workstation over a standard notebook or PC

## Outstanding performance



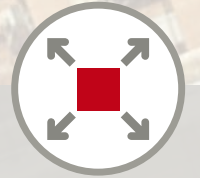
- **Processors**  
Intel® Xeon® single and dual-processor  
Up to 2 x 28 cores  
High frequencies (up to 4.50 GHz)
- **High-speed memory**  
DDR4 memory with up to 2,666 MHz
- **Professional graphics cards**  
from AMD and NVIDIA

## Maximum reliability



- **Workstation ISV certification**
- **Server-class technology**  
i.e. RAID capable storage, SAS controller, ECC memory (error-correcting-code), Xeon processors
- **Form factor and power supply characteristics**  
more conducive for high thermal and electrical demands
- **Long lifecycles of minimum 36 months**
- **Support of 24/7 operation**  
(business critical and enhances availability drives)

## Unrivalled expandability



- **Maximum component selection**  
Processors, graphics cards and hard drives
- **Graphics**  
Up to 3x graphics cards  
Full height graphics  
Optional configurable
- **Plentiful expansion bays**
- **Serviceability**  
Front access storage, cable free and tool-less design



# CELSIUS Workstations: A closer look

Your customers might want a small footprint, a mobile device or maximum performance. Our workstations can cater for their needs.

Save space without sacrificing power



## CELSIUS W570power+

- **Performance. Expandability. Price.** Efficient Intel® Core™ processors or powerful Intel® Xeon® E3-1200 v6 processor, Windows 10 Pro, 64 GB DDR4 2,400 MHz memory (incl. ECC), up to 28 TB and super-fast PCIe SSDs
- **New, space-saving design.** Innovative, cable-free 21-liter desktop workstation up to NVIDIA® Quadro® P4000, whisper quiet with 18 dB(A) only
- **Ready for virtual reality.** Show your 3D CAD or architectural drawings in a fully immersive VR environment
- **2-in-1: workstations and point-of-sale.** Connect your cash drawer and scanner – and stay open 24/7

» Learn more

Road warrior



## CELSIUS H770

- **True workstation performance.** Stylish design, 36.9 cm (15.6-inch) Full HD and 4k LED backlight display, powerful Intel® Xeon® processors and M.2 SSDs (supporting quick loading of core applications), astounding graphics performance
- **Full connectivity for business users.** Thunderbolt™ 3, DisplayPort (full size) and VGA
- **Worry-free docking experience.** One port replicator shared by up to eight mobile devices
- **Maximum security.** Optional PalmSecure™ or fingerprint sensor and TPM 2.0

» Learn more

Bring your ideas to life



## CELSIUS M770

- **Performance you can count on.** 1st Generation Intel® Xeon® Processor W Family, supports Windows 10 Pro for Workstations, up to 256 GB DDR4 2,666 memory, Fujitsu SSD PCIe card (up to 2 x 1 TB)
- **Smart Access and Smart Security.** Cold-plug Technology: Storage accessible via a front disk tray, optional security lock (side door and front access), intrusion detector sensor integrated into the power supply
- **Smart Usability and Smart Power Supply.** Easy to service: cable-free design, green touchpoints, rack mountable (4U)
- **VR-ready.** Powered by professional NVIDIA® Quadro® VR-ready graphics cards

» Learn more



Windows 10 Pro means business.

» Want to know more? Talk to your Fujitsu account manager or contact the partner center via email [ro-servers@alef.com](mailto:ro-servers@alef.com)

# Virtual reality: immerse yourself into your innovations

Virtual reality (VR) is now a powerful business tool. You can test and develop designs at a fraction of the cost. And it can take demos and brand experiences to a new level.

To take advantage, you require powerful and reliable hardware which allows your VR experience to be fully immersive, with high fidelity visuals and support real-time stereo rendering while moving through a scene.

## VR can be used throughout the entire workflow:

- Concept Design
- Design Development
- Design Review & Verification
- Marketing
- Service & Maintenance
- Virtual Prototyping





# Accessories and support

## Accessories

Our accessories help your customers get even more out of their devices. They meet the same high standards as our devices. And they are compatible across product ranges to save money.

Introducing some of our most popular accessories:

### Port Replication PR09

Our new USB Port Replicator PR09 is the perfect solution for shared desk environments within a hyperconnected world.



» Discover more

### Messenger Bag 14

Your perfect and stylish travel companion, our Messenger Bag protects notebooks with up to 14-inch screens.



» Discover more

### Skype Business Keyboard KB950

Our modern, slim line USB keyboard with integrated Skype for business features. Extremely reliable with high-speed input is the perfect way to manage incoming and outgoing calls.



» Discover more

Discover our complete accessories portfolio:

- [General accessories](#)
- [System-related accessories](#)

## Fujitsu Hardware as a Service

No more major capital expenditure. No more obsolete equipment. No more long waits for an upgrade. With just a simple, low-cost subscription your customers can:

- Keep their IT budgets in check
- Add hardware at any time
- Experience hi-tech not high-cost
- Right-size their technology for extra efficiency
- Free up their cashflow
- Keep support visits to a minimum with hardware renewal every three years.
- Keep up to date with the latest technology trends



Latest tech. Affordable plan.

Free your IT budget with FUJITSU Hardware as a Service

Get the devices you need, cut your Capex, and refresh your technology every three years with just one low cost monthly subscription.

With FUJITSU Hardware as a Service, you will find the new before the rest.

Shipping tomorrow with you

FUJITSU

» Find out more

## Warranties

Explore our additional warranties and deliver complete peace of mind to your customers.

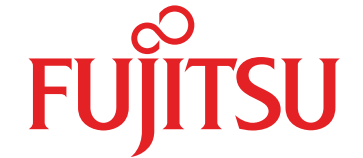
» Learn more



Windows 10 Pro means business.

» Want to know more? Talk to your Fujitsu account manager or contact the partner center via email [ro-servers@alef.com](mailto:ro-servers@alef.com)

shaping tomorrow with you



**Want to know more?** Talk to your Fujitsu account manager or contact the partner center via email:

» [ro-servers@alef.com](mailto:ro-servers@alef.com)

## FUJITSU

©Fujitsu 2018. All rights reserved. No part of this document may be reproduced, stored or transmitted in any form without prior written permission of Fujitsu Services Ltd. Fujitsu Services Ltd endeavours to ensure that the information in this document is correct and fairly stated, but does not accept liability for any errors or omissions.

Microsoft, the Microsoft logo, Windows and Windows Server are trademarks or registered trademarks of Microsoft in the U.S. and/or other countries.

[fujitsu.com/fts/](http://fujitsu.com/fts/)

Windows 10 Pro means business.

